

MIAMI EDITION

FLORIDA DESIGN

THE NEW
Miami
Skyline



BACK ON TOP

AN INSPIRATION OF IRRESISTIBLE ELEMENTS CREATES MAGICAL MOMENTS
FOR THE HOMEOWNERS OF THIS W SOUTH BEACH PENTHOUSE

Minimalistic elements make bold statements, as does Ochre's "Seed Cloud" solid cast bronze buds, each housing glass teardrops that dangle above Holly Hunt's curved oak dining table without obstructing the mesmerizing views.

INTERIOR DESIGN BY SOFIA JOELSSON,
SOFIA JOELSSON DESIGN, MIAMI BEACH, FL
GENERAL CONTRACTOR SAGEWOOD CONSTRUCTION, MIAMI, FL
TEXT BY REGINA SEMERARO
PHOTOGRAPHY BY EMILIO COLLAVINO, MIAMI, FL

SOFIA JOELSSON

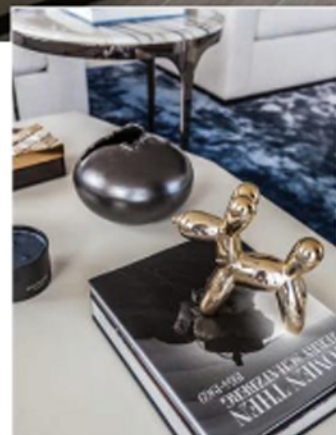
"Spaces often tell me what they want to be: all I have to do is listen. The seascape and cityscape at sunset inspired the redesign of this penthouse with its varying shades of blue."



An entity all its own, a wine room draws guests into the living area outfitted for the ultimate in entertaining. It is a stylish approach with custom L-shaped sectionals from Fede Furniture and two sets of cocktail tables staggered to create dimension. Interlude Home's marble-topped tables join the sculptural forms of Holly Hunt's cast concrete tables that evoke the architectural beauty of rocks.



BEING SENSITIVE TO ALL SURROUNDINGS, INTERIOR DESIGNER SOFIA JOELSSON SPECIFIED A NEUTRAL COLOR PALETTE WHILE SPRINKLING IN VIVID HUES OF COBALT BLUE THAT TRANSCEND TO A SOFT, DOVE BLUE THROUGHOUT THE HOME.



MEET THE INTERIOR DESIGNER, SOFIA JOELSSON, who transformed this 6,000-square-foot penthouse into a masterpiece of art, ingenuity and design. After an unfortunate disaster that left the home nearly destroyed, the owners reached out to Joelsson, who had designed three of their other homes over the years. "They trusted me with an understanding of their needs and desires," the designer says. The inspiration, a sophisticated family who desired a leisure lifestyle with open spaces, comfortable furnishings and boastful views of the city and beach.

A soothing blend of textures, patterns and color begins in the dining area, where the hide area rug speaks volumes with its circular pattern and soft warm shades. It is here where the designer's eye takes charge as retro style chairs are wrapped in vibrant blue velvet. "I didn't want a fully upholstered chair, the open back creates a lighter look for

the space," Joelsson says. The dining table is as special as can be with its cerused oak top, a brass metal frame and bronze-tipped legs.

Aesthetics was not the only goal as durability was a key part of the open interior scheme that seamlessly flows from one space to another. Porcelain flooring in a herringbone pattern that naturally resembles real oak points the way to the living area, where an energetic vibe continues the pull of graduating shades of blue. L-shaped

ABOVE: Cabinetry by Wambia Woodwork runs the expanse of the kitchen, where Interlude Home's "Darcy" bronze barstools from Curated Living offer family and friends a comfortable seat at the island bar. Ochre's "Celestial Pebble" glass orbs from David Sutherland radiate a soft horizontal glow that creates a sinuous flow and continuity throughout the open interior scheme.



Living in a penthouse has its advantages. With stretched out views as far as the eye can see, the Miami lifestyle is one that is sure to satisfy to the soul.

sectional sofas swathed in a durable, crisp white chenille pair with a series of undulating cocktail tables. "I like to layer my cocktail tables using multiple pieces and varying heights," Joelsson says. The soft Tencel area rug mimics the soothing hues of the sea and sky beyond.

The gentle ebb-and-flow continues in the kitchen with a custom concave bar designed with LED lighting to create ambience while illuminating the striations of gold in the porcelain countertop as well as spotlighting the expressiveness of the carved wood base. "I love the colors and design of the porcelain as the variances reveal an unstructured and organic flow," the designer says. With that, barstools flatter the island with their bronze frames and taupe leather-upholstered seats, while *Delano Pool* by artist Philipp Hofmann catches the eye and begs to question ... painting or photography?

With sensational and inviting views, the guest room beckons visitors night after night. The private space lends itself to an ultimate relaxing experience. While texture plays an important role, the designer didn't want to overindulge with textiles, rather, a subtle textured wall covering that resembles grass cloth was just enough. "I love layers and layers of textures for adding dimension, as long as they have similar tonality," Joelsson says. The headboard is

AWOW: The home has a repertoire of visual elements throughout and the guest room is no exception. Resembling old fashioned pocket watches, the imaginative "Timeless" light fixtures by Contardi give a solid nod to the past above Weisman's channel-back chair that swivels to take in the ocean view.

WALL: Knowing the value of accessorizing, even the master bath cradles outstanding detail as a bronze-trimmed stool by Kim Salmela spotlights the legs of the Malson 55 vanity. A solid stone tub offers a deep soak, while Studio A's gracefully sculpted, white "Hands" stool from Global Views corners the space in sheer whimsy.

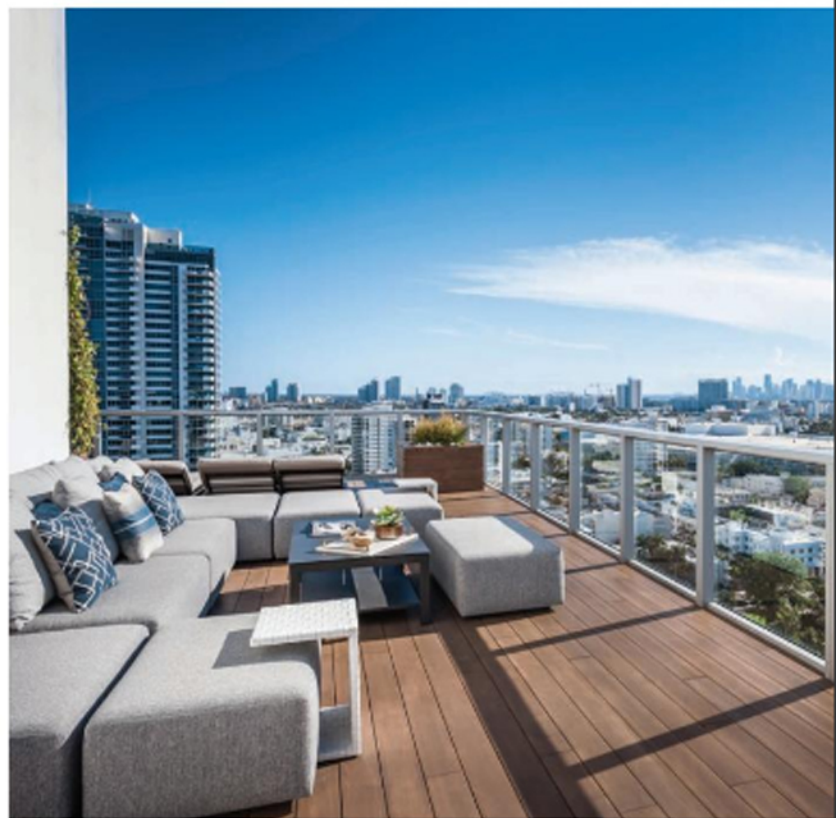




tailored with upholstered leather while the bedding flaunts pops of deep purple and neutral shades that pull out the colors in the floral art that dots the wall above.

Slip away to serenity with a master bath that recalls the luxury of a five-star spa with day-dreamy views in an irresistible environment. Being able to salvage some of the bath's original marble flooring was the origin of the spa-like design. A mirrored wall is framed in rift cut oak to create a reflective backdrop behind the freestanding, solid stone tub. A shagreen vanity with bronze legs interacts with the milk marble flooring that creates continuous movement with its gray and taupe horizontal lines.

The private rooftop terrace is an entertainer's dream come true. Back on top of the world, family and friends gather once again to enjoy a lively poolside party or an intimate rooftop soiree.



AREA: The rooftop terrace overlooks a private plunge pool, barbecue, and a bar and lounge area on the balcony — all partially covered by an oversized trellis. Woven-rope furnishings from Couture Jardin offer a nautical flavor.

AREA: **SEAT:** On the rooftop terrace, a modular sofa from Fede Furniture is draped in a Perennial fabric that is durable yet fun. Interchangeable pieces fit together like a puzzle.

SOURCES

DINING AREA

Dining table - Holly Hunt, Miami, FL
 Dining chairs - Eichholtz, Oreo, Miami, FL
 Centerpiece - CFA Design Group, Miami, FL
 Chandelier - Ochre, David Sutherland, DCOTA, Dania Beach, FL
 Drapery fabric - Great Plains, Holly Hunt, Miami, FL
 Area rug - Kyle Bunting, Edelman Leather, DCOTA, Dania Beach, FL

LIVING AREA

Sofas - Fede Furniture, Miami, FL
 Round cocktail tables and occasional table - Interlude Home, Curated Living, Miami, FL
 White cocktail tables - Holly Hunt, Miami, FL
 Table lamp - CB2, Miami Beach, FL
 Drapery fabric - Great Plains, Holly Hunt, Miami, FL
 Area rug - Oliver Treutlein, Meerbusch, Germany
KITCHEN
 Artwork - Galerie Barbara von Stechow, Frankfurt, Germany

Cabinetry, island and wine room - Wambia Woodwork, Hallandale, FL
 Countertops - Fine Surfaces, Miami, FL
 Backsplash - Nations Glass, Miami, FL
 Counter stools - Interlude Home, Curated Living, Miami, FL
 Light pendants - Ochre, David Sutherland, DCOTA, Dania Beach, FL
GUEST ROOM
 Bed - Camerich, Miami, FL
 Table lamps - Regina Andrew, Curated Living, Miami, FL

Armchair - Walman Home, Curated Living, Miami, FL
 Light pendant - Contardi, Curated Living, Miami, FL
 Wall covering - Phillip Jeffries, Holly Hunt, Miami, FL
 Drapery fabric - Rothman Associates, Miami, FL
 Area rug - Surya, Curated Living, Miami, FL
 Balcony chairs - David Sutherland, DCOTA, Dania Beach, FL
MASTER BATH
 Hands stool - Studio A, Global Views, Dallas, TX
 Vanity stool - Kim Salmola, One Kings Lane, New York, NY

Vanity - Malson 55, Curated Living, Miami, FL
BALCONY AND ROOFTOP TERRACE
 Furnishings - Couture Jardin, Fort Lauderdale, FL
 Round occasional tables - Cane-line, Curated Living, Miami, FL
 White counter stools - Serge de Troyer, Miami, FL
 Modular sofa - Fede Furniture, Miami, FL
THROUGHOUT
 Recessed lighting - WAC Lighting, Synchronizing Systems, Miami, FL
 Flooring - Luxorra, Miami, FL